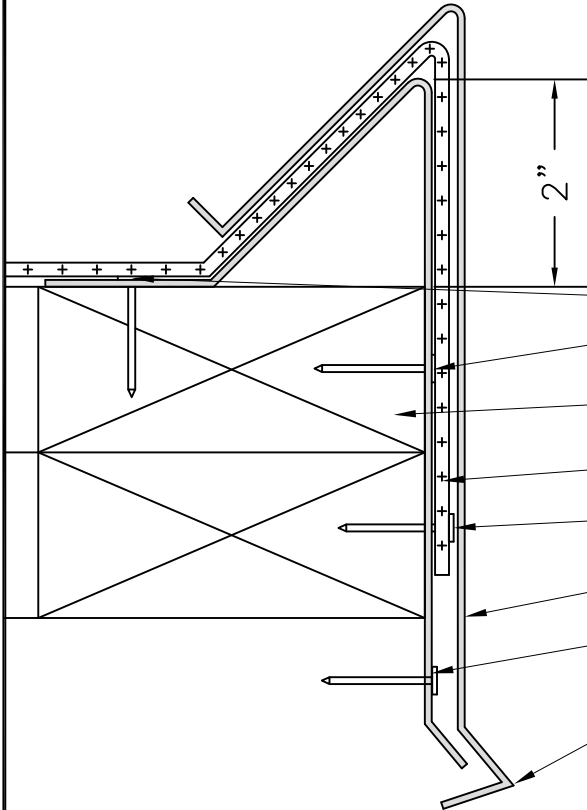
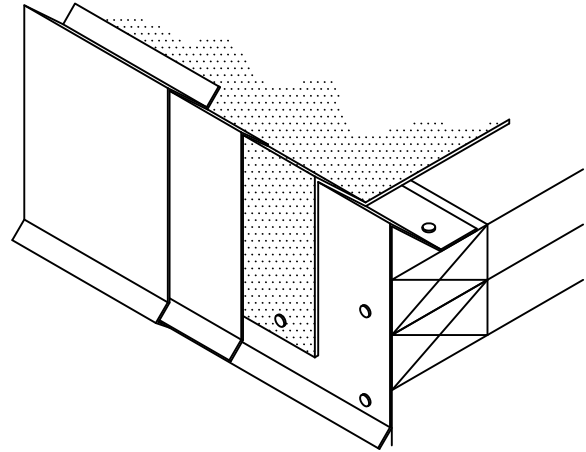




1-800-248-0280  
831 Morley Drive  
Saginaw, MI 48601

DETAIL E3590



- Fasten waterdam in pre-punched holes 12" o.c. using 1-1/4" Galv. ring shank roofing nails or #14 screw
- Wood nailer
- Membrane
- Fasten membrane
- Metal cover
- Appropriate fastener for wall condition
- 6" wide field crimp at each end then 24" o.c.

- NOTE 1: Follow general recommendations of the membrane manufacturer's application of materials over the roof edge.
- NOTE 2: Allow for 1/4" expansion gap between 10' lengths of base and cover.
- NOTE 3: Use stainless steel fasteners when attaching into ACQ Treated wood.
- NOTE 4: Isolate all metal parts from ACQ Treated wood.
- NOTE 5: Base must be fastened at hole locations to achieve ES-1 compliance.

DATE: MARCH 2013

EDGE DETAIL

DRAWN BY: ENG. DEPT.

HIGH PROFILE™ FASCIA

SCALE: NONE

NEW CONSTRUCTION OR RE-ROOF