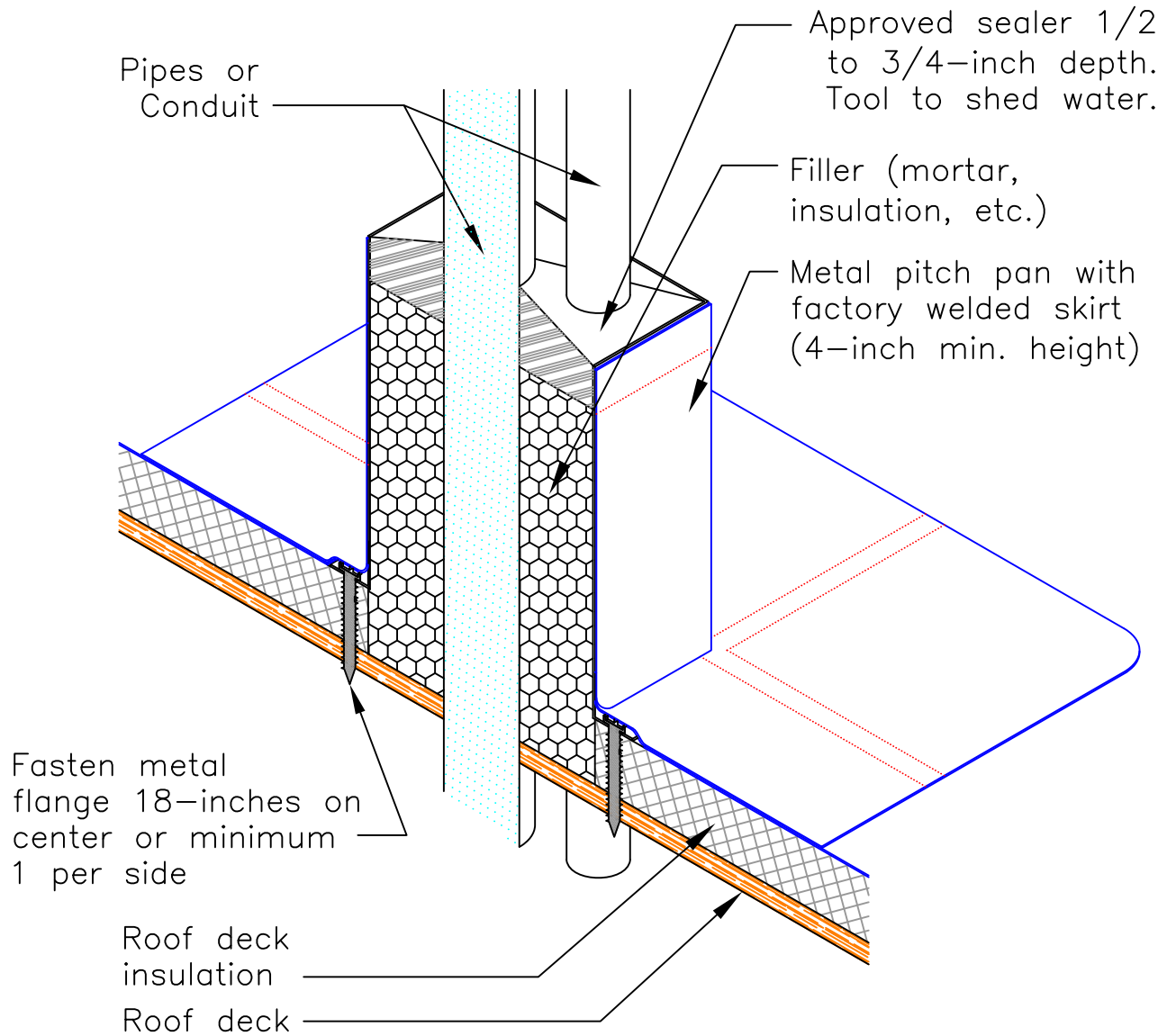




1-800-248-0280
831 Morley Drive
Saginaw, MI 48601

DETAIL E4045



Note 1: Water must not be allowed to pond within the pitch pocket. Be sure that the approved sealer is level with the top of the curb.

Note 2: Fasten deck membrane around perimeter of flashing the same fastening pattern as the field membrane, maximum 18-inches on center, and no less than one fastener per side.

Note 3: Pipes or conduit must have a minimum 1/4-inch clearance between objects or the edge of the pan.

DATE: 12/03/2013

DRAWN BY: ENG. DEPT.

SCALE: NONE

ROOF PENETRATION DETAIL

VINYL-COATED METAL PITCH PAN

NEW CONSTRUCTION OR RE-ROOF