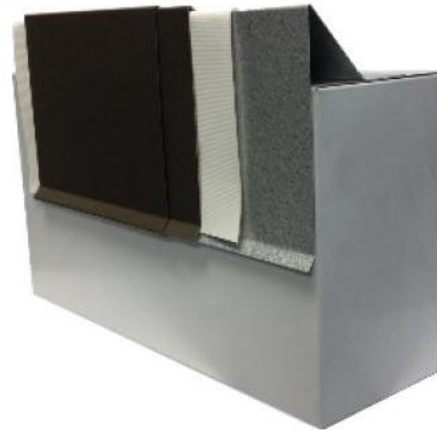


Description:

The High Profile™ (HP Fascia) system features an elevated profile to contain water and/or ballast. It is quick and easy to install with a crimping attachment for unmatched securement.

- Water dam and fascia are fabricated in 10' lengths; 4-1/2" – 8" widths.
- Concealed splice plate design provides a more pleasing appearance than standard cover plates or splice joints.
- Pre-punched fastening holes in the galvalume water dam ensure correct fastener placement and spacing.
- Ready to assemble inside and outside corners are available.

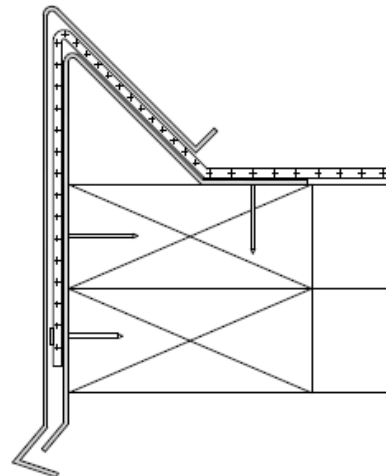


Energy Efficiency:

LEED® and ENERGY STAR® compliant; Recyclable.

Installation:

1. A wood nailer is required if 1" or greater of insulation is used.
2. This nailer should be attached to the wall in accordance with ANSI/SPRI ES-1 3.9.
3. Install in accordance with EXCEPTIONAL® Metals Detail #E3590.
4. Any deviation from the requirements set forth in detail drawings must be pre-approved, in writing, by the EXCEPTIONAL Metals Technical Department.



Codes and Standards:

- ANSI/SPRI ES-1 compliant.

Warranty:

EXCEPTIONAL Metals offers a finish and substrate warranty. Contact the membrane manufacturer for any additional warranty that may be offered.

Technical Services:

Product samples, detail sheets, color chips, and color chart are available for your submittal package. For assistance with questions or submittals, contact your local representative or call EXCEPTIONAL Metals.

Material	Gauge	Finish
Stainless Steel	24-gauge	N/A
Bonderized Steel	24-gauge	N/A
Galvalume®	24-gauge	Mill or Kynar®