

Description:

The Vinyl-Back Collector Box is constructed with a Pittsburgh seam that eliminates the need for rivets and creates a watertight product. Double-skirt scupper is factory-attached to vinyl-coated back, making field installation quick and easy.

- Collector box is manufactured with an attached scupper that is made from 24-gauge vinyl-coated metal and includes a 6" PVC membrane skirt.
- Collectors are sized according to the scupper and downspout size to allow proper drainage.
- Precisely crafted to exact specifications.
- Eliminates field fabrication, saving time and labor.
- Overflow cutouts can be incorporated in the face or sides, upon request.



Installation:

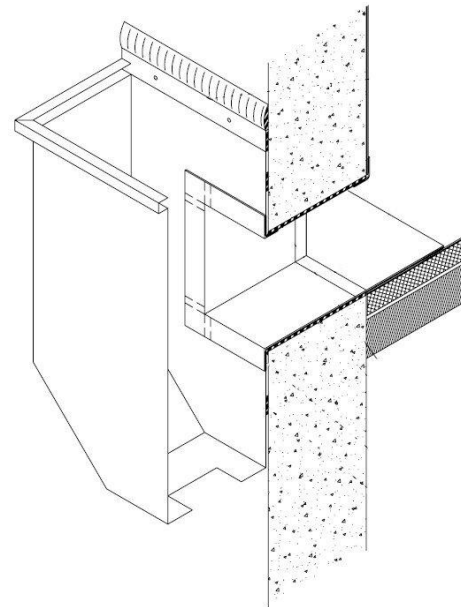
1. Install in accordance with EXCEPTIONAL® Metals Detail #2070.
2. Any deviation from the requirements set forth in detail drawings must be pre-approved, in writing, by the EXCEPTIONAL Metals Technical Department.

Warranty:

EXCEPTIONAL Metals offers a finish and substrate warranty. Contact the membrane manufacturer for any additional warranty that may be offered.

Technical Services:

Product samples, detail sheets, color chips, and color chart are available for your submittal package. For assistance with questions or submittals, contact your local representative or call EXCEPTIONAL Metals.



Material	Gauge	Finish
Aluminum	.040 / .050	Mill or Kynar®
Stainless Steel	24-gauge	N/A
Bonderized Steel	24-gauge	N/A
Galvalume®	24-gauge	Mill or Kynar®
Copper	16 oz.	Mill