



DURO-LAST® DOME STRAINER

DATA SHEET

Description:

The Duro-Last® Dome Strainer (available in blue only) is fabricated with a rigid cast aluminum dome and three weldable attachment tabs. The tabs are made of Duro-Last specially formulated roofing membrane.

For roof drains 6 inches or less in diameter, the Duro-Last Dome Strainers may be used as replacements to existing strainers or in new construction applications.

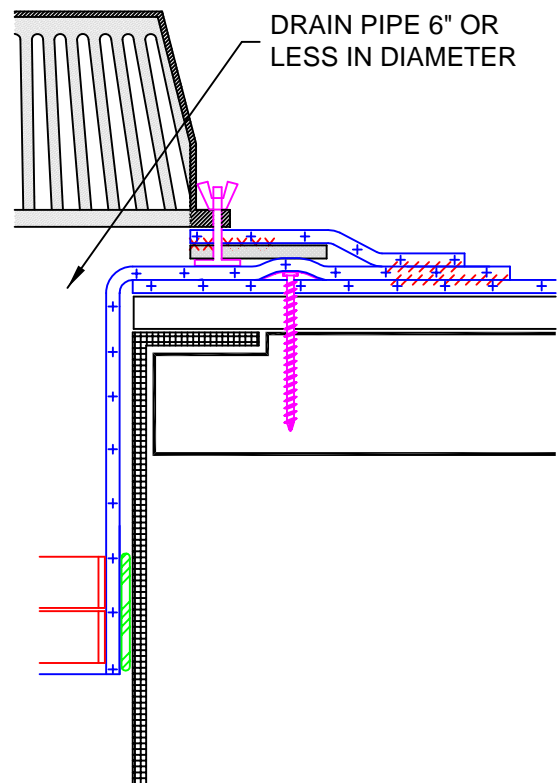
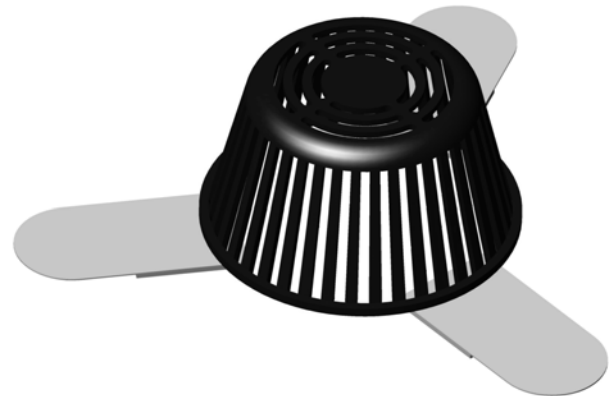
Duro-Last Dome Strainers are resistant to rust and corrosion. The design allows for free water flow and protection against clogs as well as quick installation. Dome strainers are packaged with stainless steel fittings which are used to fasten the attachment tabs to the dome strainer.

Installation:

1. The Duro-Last Dome Strainer shall be heat welded (hot-air) to the field membrane. In no instance should the dome strainer be mechanically attached to the field membrane.
2. See detail drawing 2021.

Note:

- Contractor is responsible for compliance with all applicable building codes.
- Duro-Last Roof Dome Strainer, item #1830, shall only be used with roof drains 6 inches in diameter or less. Any other roof drain strainer that is used for drain pipes larger than 6 inches in diameter must meet all applicable building codes. Questions may be directed to Technical Services or Quality Assurance.
- The Duro-Last Dome Strainer is not a watertight detail by itself.



See detail drawing 2021 for installation requirements.

Duro-Last: The Proven Performer®